

Baby Slash Neck Sweaters By Jo Whessell



Using fine 4ply acrylic yarn

Tension 6.2 or 7

7 st & 10 rows = 1 inch

These sweaters only use a small amount of yarn plus oddments for the fair-isle

Front and Back the same:

1. 22ins/ 56cm, (24"/61cm, 26"/66cm).
2. Cast on 84 (91, 98) stitches for 1x1 rib, T2/2 knit 20 rows.
3. Transfer stitches to main bed, MT & RC 000.
4. Placing the fair-isle pattern where you like, knit to RC 60 (70, 86) place a marker at each end of the row.
5. Continue knitting to RC 116 (130, 150) making sure that you are not ending in the middle of a pattern.
6. Transfer the stitches back to the ribber for 1x1 rib.
7. Using T3/3 knit 12 rows.
8. Place a marker approx needle R30 and L30 (depending on how large your child's head is).
9. Cast off leaving a nice long piece of yarn for sewing up.

Sleeves, both the same:

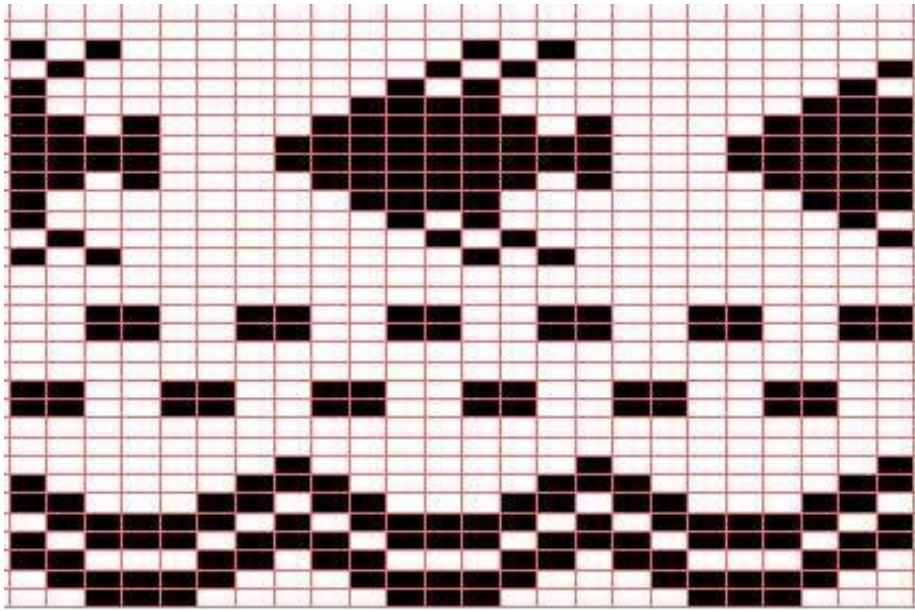
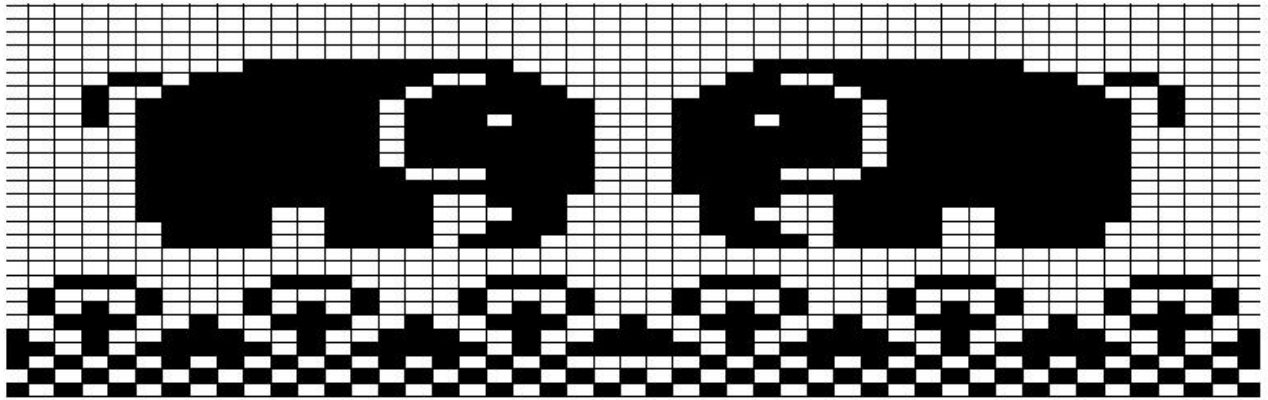
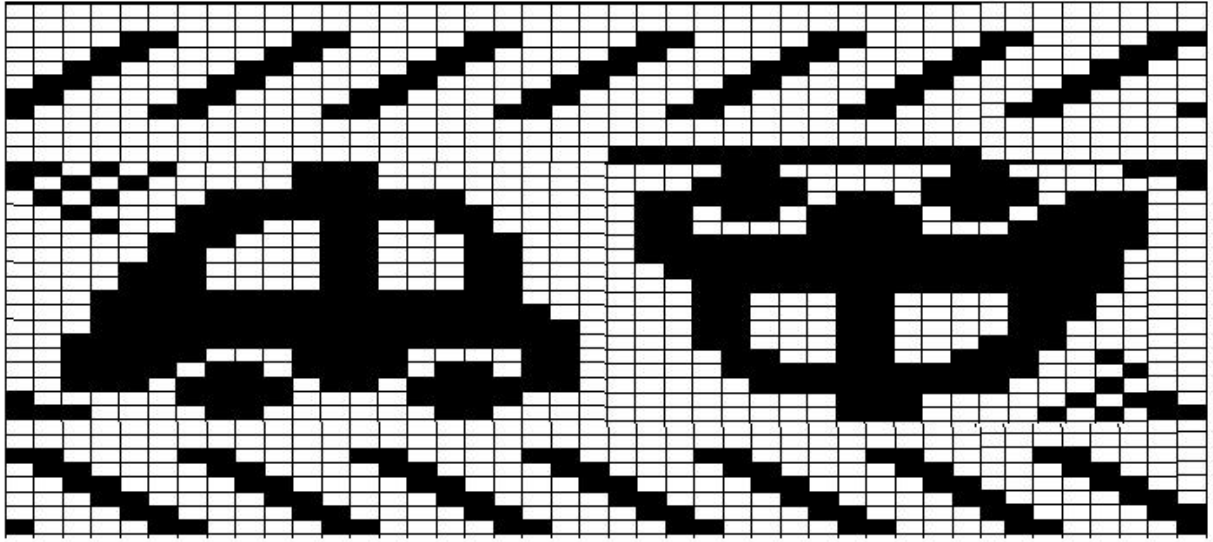
1. Cast on 42 (42, 46) stitches for 1x1 rib, T2/2 knit 20 rows.
2. Transfer stitches to main bed.
3. MT in stocking stitch (plain knit) RC 000, knit 2 rows.
4. Increase 1 stitch at each end of next and every following 3rd (4th, 4th) row until there are 78 (84, 98) stitches.
5. Knit straight to RC 70 (90, 110).
6. Place marker at centre stitch.
7. Cast off leaving a nice long piece of yarn for sewing up.

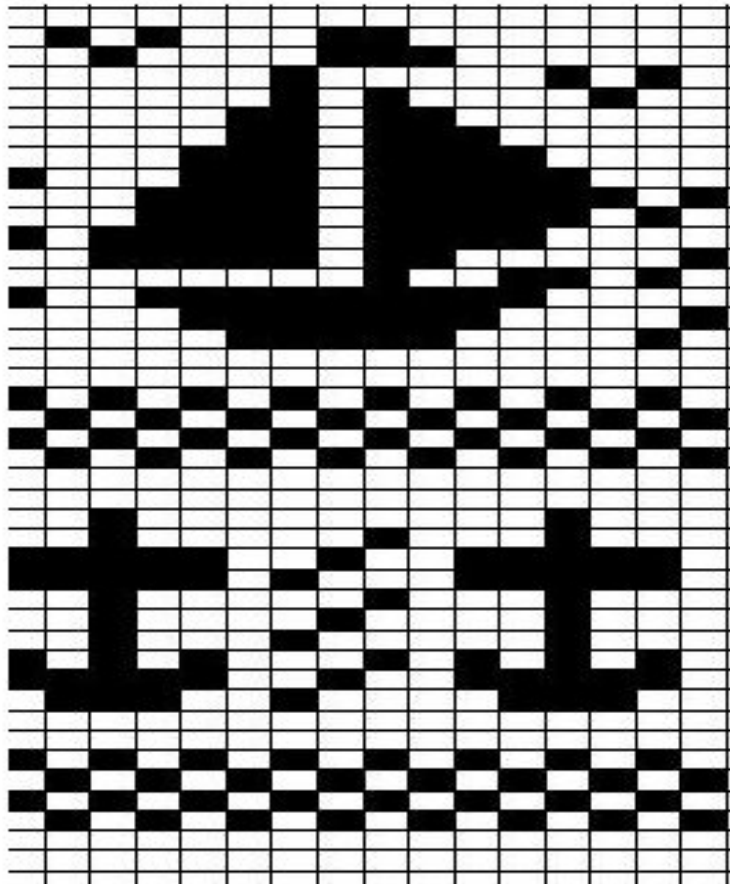
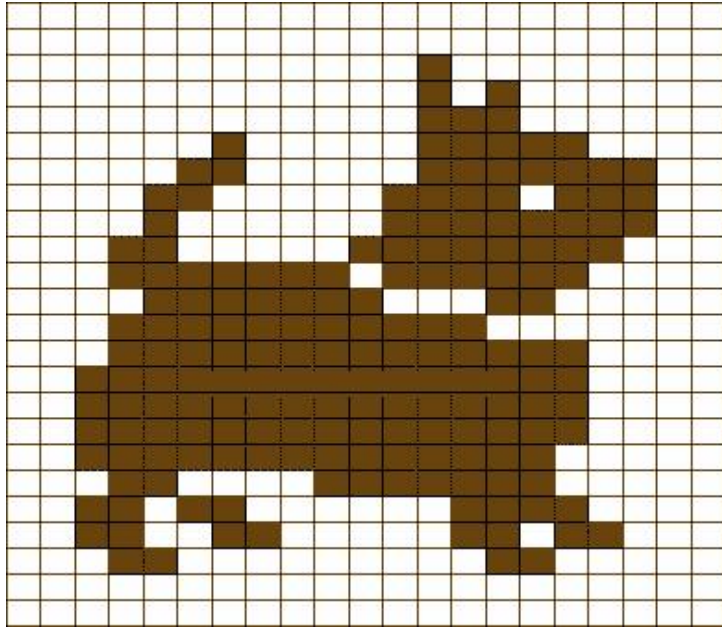
Making up:

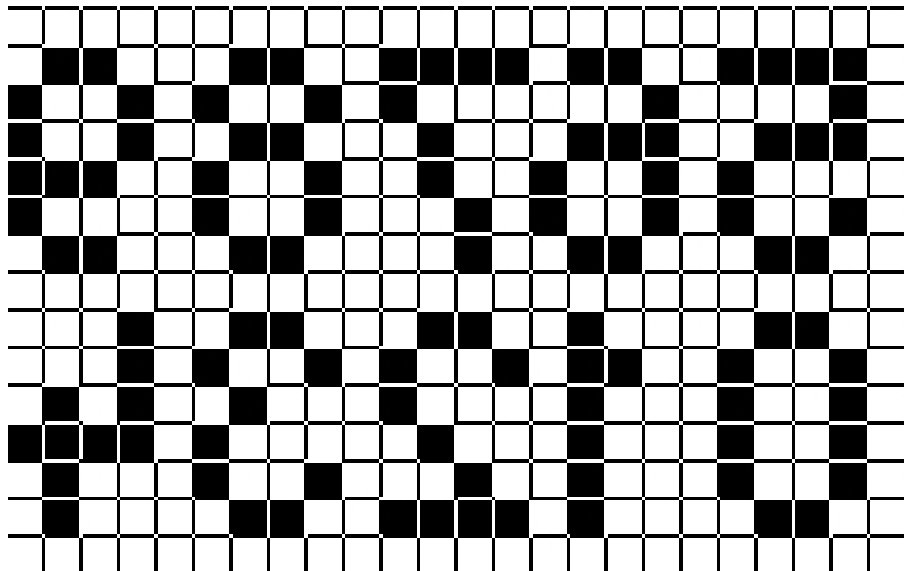
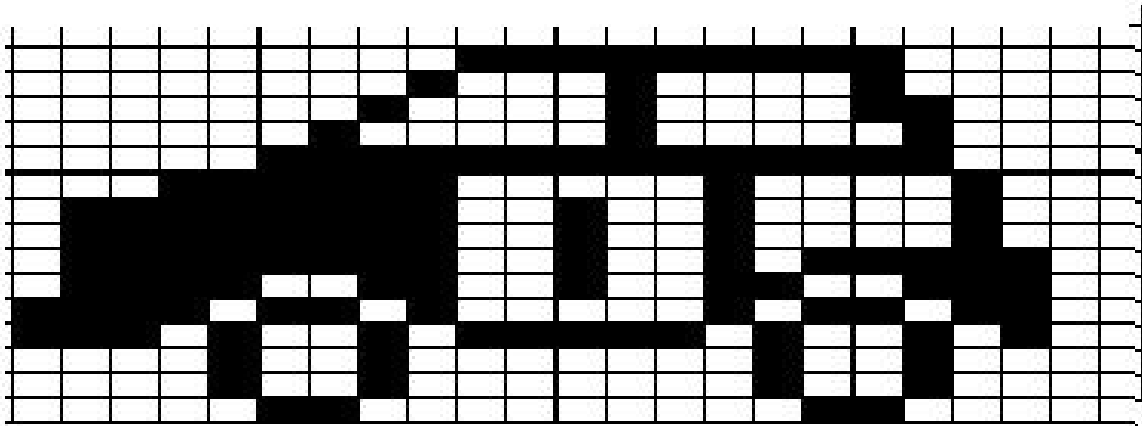
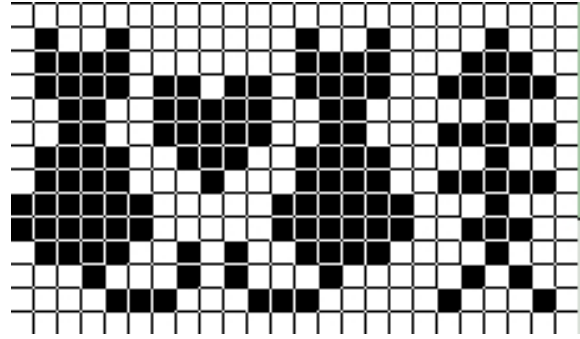
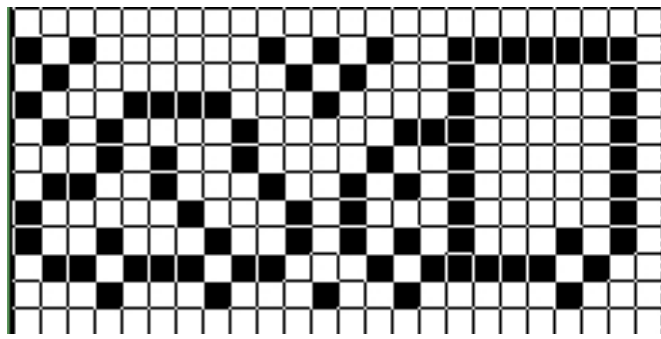
1. Sew part of each shoulder to the other, matching the stitches, don't cast off this bit yet.
2. Using the centre marker on the sleeves, set the sleeves into position, and attach.
3. Attach side seams.
4. Find child, put sweater over their head, and you will see how many stitches to sew up on the shoulders.

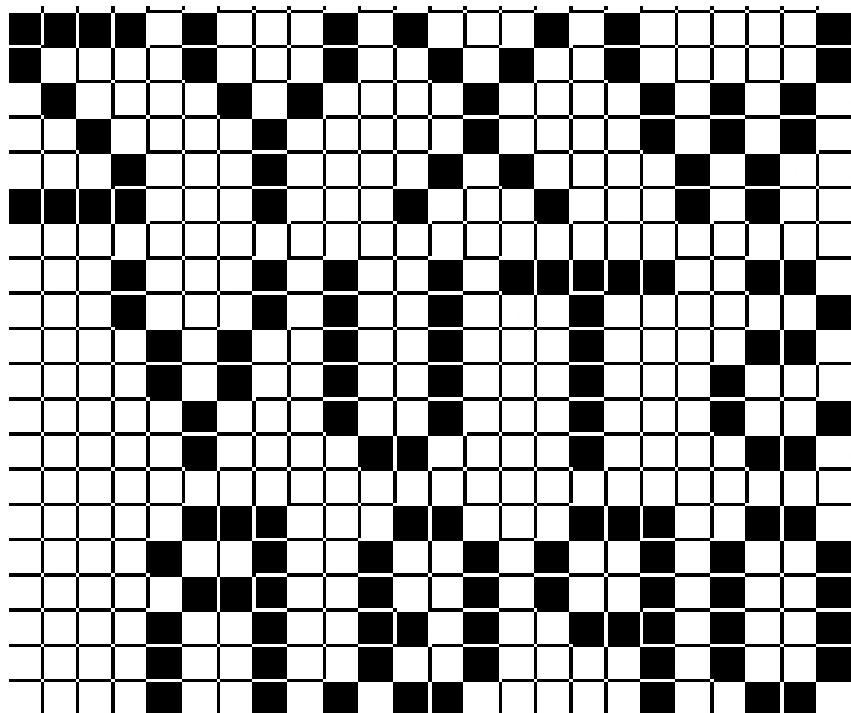
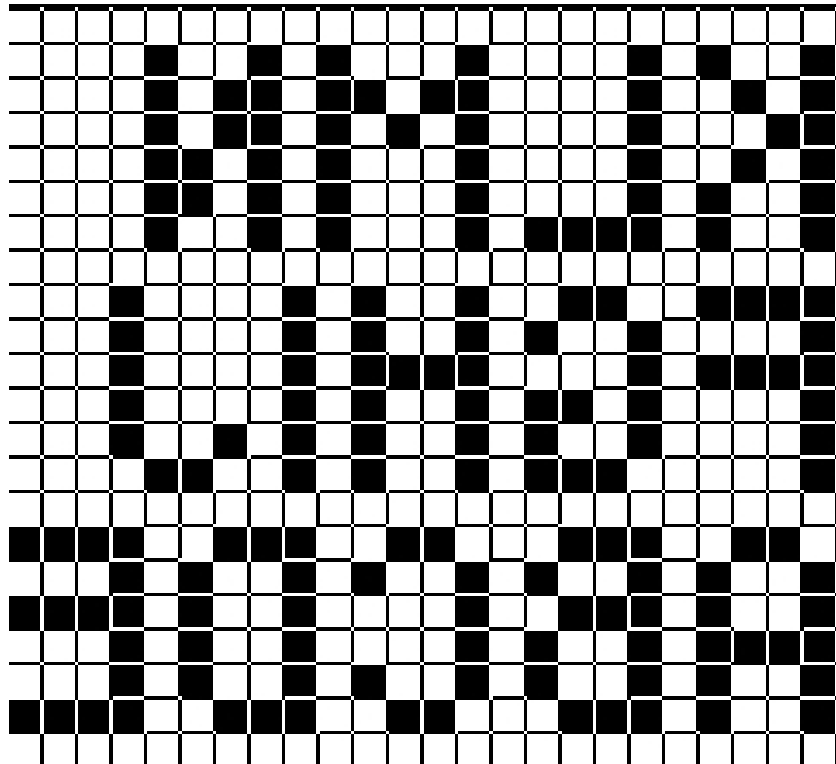
When pressing this garment be sure not to press the slash-neck rib as it will lose the elasticity - after the first wash it will loosen naturally











F
I
S
H
Y

