

## Pillow-cases for Rectangle Pet Baskets



How many times have you bought a new bed for the dog or cat which looks like it has a lovely cosy clean cushion in it only for it to get filthy within a week or so – you wash it, the white is no longer white, the cushion is flat and uninviting and you feel your money is wasted. I like to make up colourful pillow-cases to cover REAL pillows for my beloved pets.

The medium cushion is approximately the same size as a standard sized pillow for your own bed – which is ideal when buying a feather pillow which has a pillow protector. My cats love nesting in their bed, & I love making attractive covers for their pillow. I feel mean making them sleep on top of the thin pet cushions especially when a real pillow frequently costs a lot less for a lot more comfort. If you look around your bedding store you will find that they have pillows in different sizes with assorted thicknesses of fillings starting from only around £1.50 each for washable Dacron-filled & £3 or £4 for feather-filled whereas the pet cushion is likely to cost more than £5.99 and is as thin as can be. No wonder the cat likes sleeping on your bed – much more comfortable!

Whilst these below are the “standard” measurements for the rectangle baskets, I have included tables which cater for more sizes.

Rectangle Pet Bed Cushion	inches	L (cm)	W (cm)
small	20x15	50	38
medium	25x17	64	44
large	27x21	69	53

### Materials:

1 cone of 4 ply yarn in the main colour.

1 cone of 4 ply yarn for the designs where you only have 1 contrast colour.

Assorted part-cones for the designs where there are more colours needed.

### Instructions for all cushion covers:

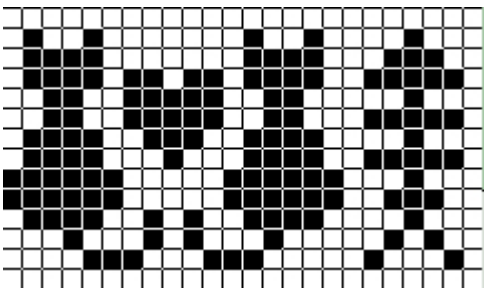
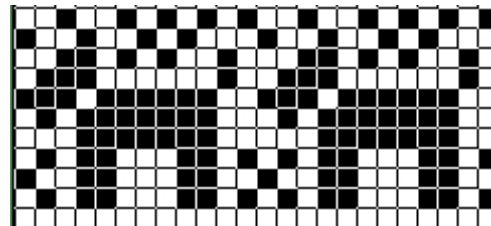
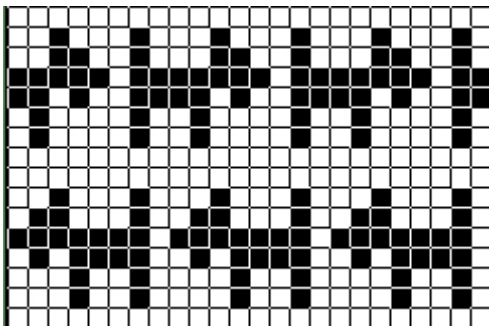
1. Underside: \*Using the tension chart above, cast on your required number of needles for the width with waste yarn.

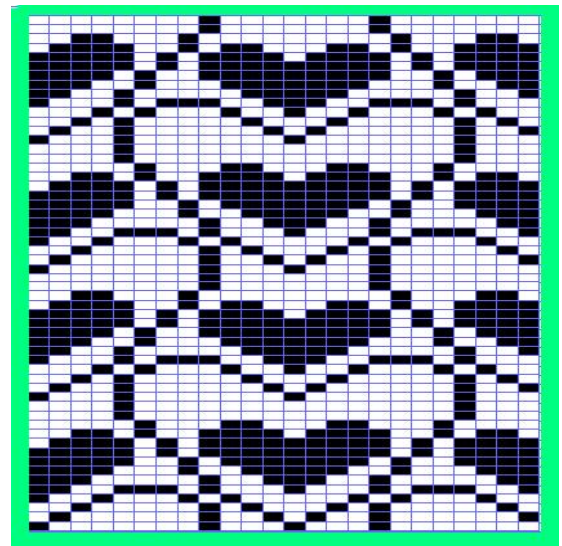
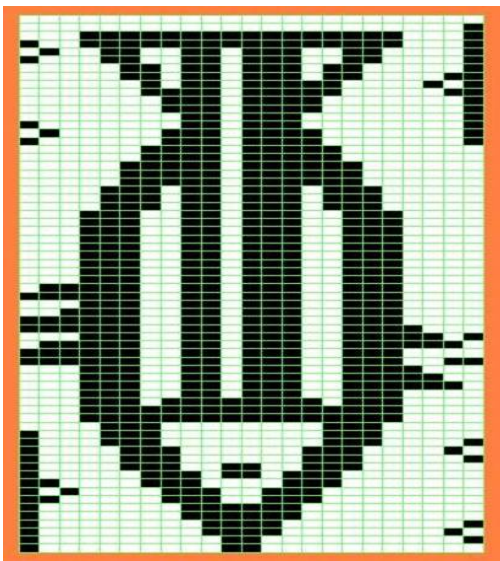
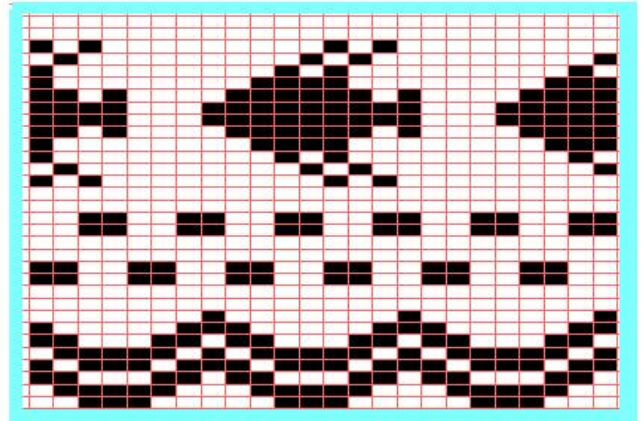
2. RC000, using main colour, make a hem (knit 12 rows T-1, knit 1 row T10, knit 12 rows T-1, place stitches from 1<sup>st</sup> row onto corresponding needles, knit 1 row T)\*
3. \*\*RC000. Using the tension chart, knit the amount of rows you require for the length in the fair-isle pattern\*\*
4. Cast off onto waste yarn.
5. Topside: Repeat from \* to \*.
6. RC000. T-1 in fair-isle pattern knit approximately 60 rows completing the last pattern.
7. Marking each end of the row with a scrap of contrast waste yarn, knit 1 row on loose tension T10.
8. RC000. Repeat \*\* to \*\*.
9. Either cast off with waste yarn & crochet this edge to the raw edge of the first piece, or place the stitches from the first piece onto the corresponding needles (front facing) and cast off with your latch tool or linker.

**Making up:**

1. Press pieces.
2. With right sides facing, pin the 2 pieces together along the base & up to the marker points, seam together either with a crochet stitch or over-sewing.
3. Fold the remaining section over so that it covers the underside, and seam this down each side.

ScanTheCat Designs 2006

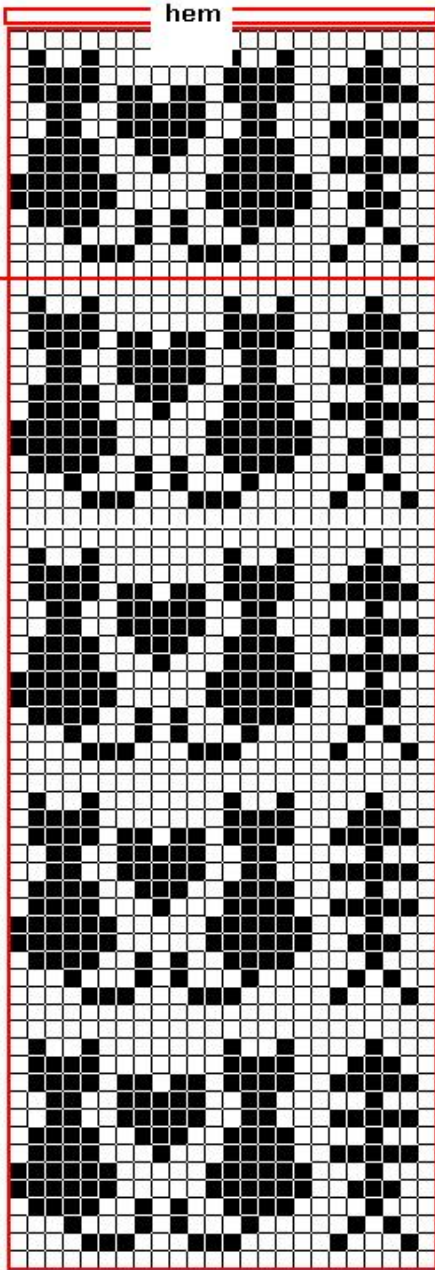




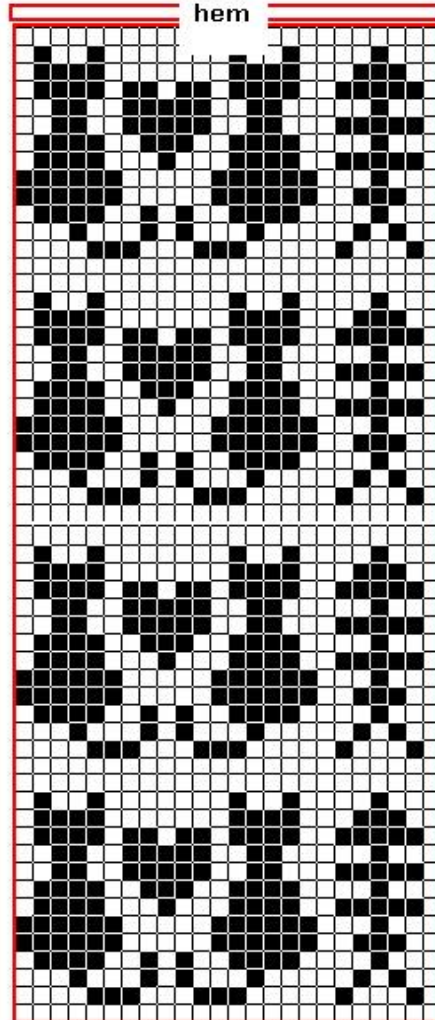


TOPSIDE

fold  
over  
flap



UNDERSIDE



Tables for Pet Baskets in Various Sizes – note that 14 or 15 stitches to the inch may suit a tuck or slip stitch.

These tables are equally useful for making up attractive easily removable cushion covers.

Number of stitches to the inch	5.5	6.0	6.5	7.0	7.5	8.0	8.5
Width in inches	Cast on	Cast on	Cast on	Cast on	Cast on	Cast on	Cast on
15	83	91	97	105	113	121	127
16	89	97	105	113	121	127	137
17	93	103	111	117	127	137	145
18	99	109	117	127	135	145	153
19	105	115	123	133	143	153	161
20	111	121	131	141	151	161	171
21	115	127	137	147	157	169	179
22	121	133	143	155	165	177	187
23	127	139	149	161	173	185	195
24	133	145	157	169	181	192	
25	137	151	163	175	187	200	

Number of rows to the inch	7	8	9	10	11	12	13	14	15
Length in inches	Knit to RC	Knit to RC	Knit to RC	Knit to RC	Knit to RC	Knit to RC	Knit to RC	Knit to RC	Knit to RC
16	112	128	144	160	176	192	208	224	240
18	119	136	153	170	187	204	221	238	255
20	140	160	180	200	220	240	260	280	300
22	154	176	198	220	242	264	286	308	330
24	168	192	216	240	264	288	312	336	360
26	182	208	234	260	286	312	338	364	390
28	196	224	252	260	308	336	364	392	420
30	210	240	270	300	330	360	390	420	450
32	224	256	288	320	323	355	387	419	451